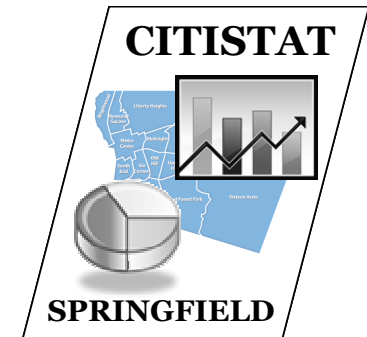


NeighborhoodStat



CitiStat Briefing Report September 28, 2009



Agenda

- Updates
- Progress Reports
 - Marble Street
 - Mallory Village
 - Leyfred Terrace
- Old Hill efforts
 - Overview of initiative targeting Old Hill
 - Citywide NSP data from HUD
 - Review of the baseline data
 - Possible performance metrics

Updates

Development

1. Update on developing a matching funds program supporting home improvements using CDBG monies
2. Consider developing a pilot program posting signs on City-owned properties

Planning

3. Status of Form B review for Leyfred Terrace

Updates

Housing

1. Update on the possibility of using some PILOT funds to support home improvements
2. Update on additional research into use of NSP funds with receivers

Law

3. Consider receivers for 168, 127, and 148 Leyfred Terrace

Updates

CitiStat

1. Analyze the relationship between foreclosures, tax title, and arson

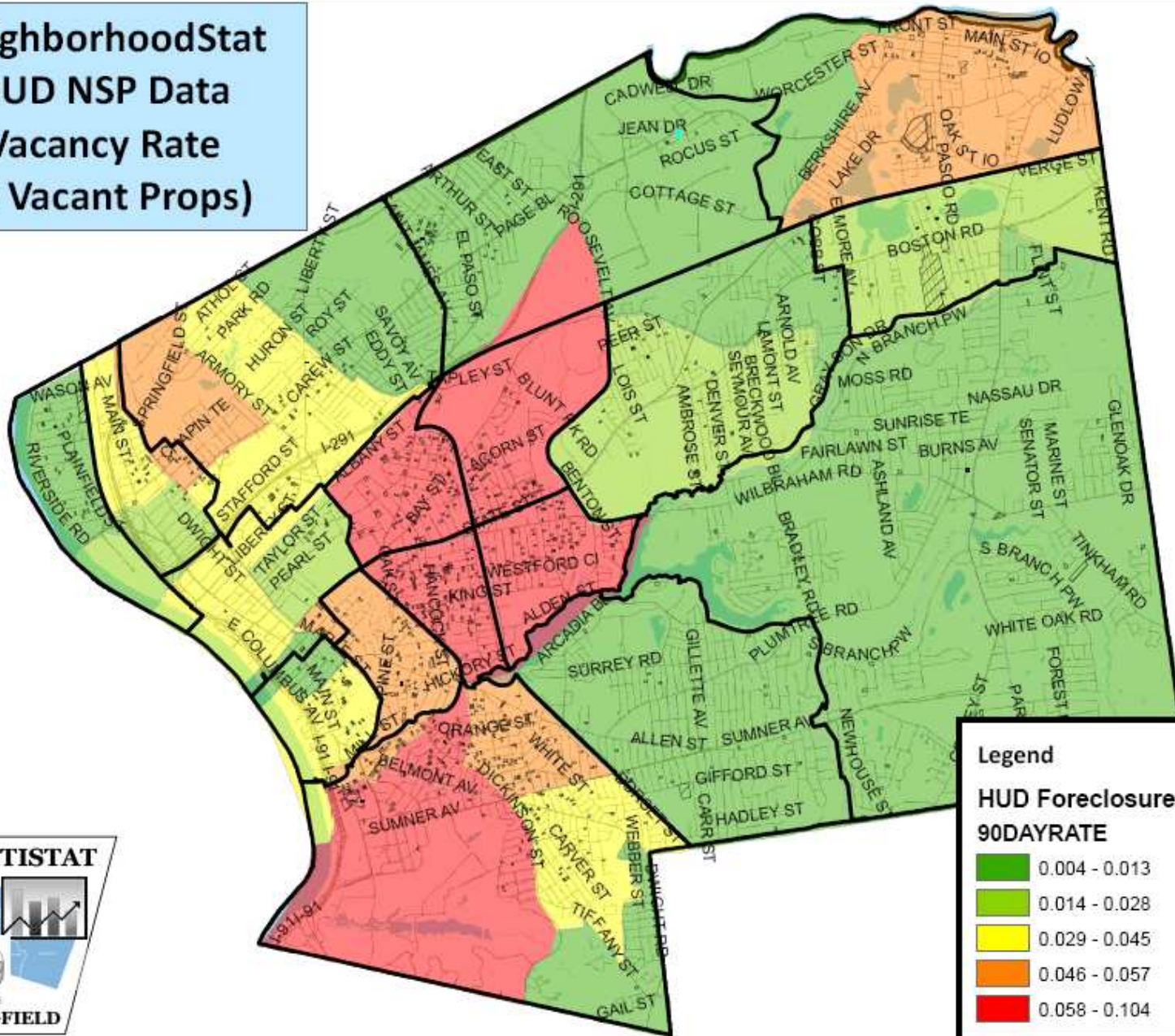
Progress Reports

- Marble Street
- Mallory Village
- Leyfred Terrace

Old Hill/Six Corners

- Summary of emerging efforts
 - NSP
 - HAP Community Stabilization Initiative
 - Others?
- NSP Citywide data from HUD
- Maps of recent data
 - Mostly March to August 2009 (six months sample)
- Sample and discussion of possible neighborhood performance metrics
 - Data is Old Hill only

**NeighborhoodStat
HUD NSP Data
Vacancy Rate
(w Vacant Props)**



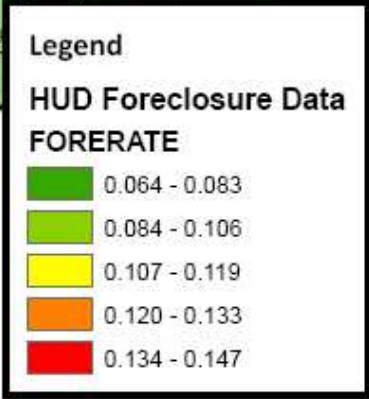
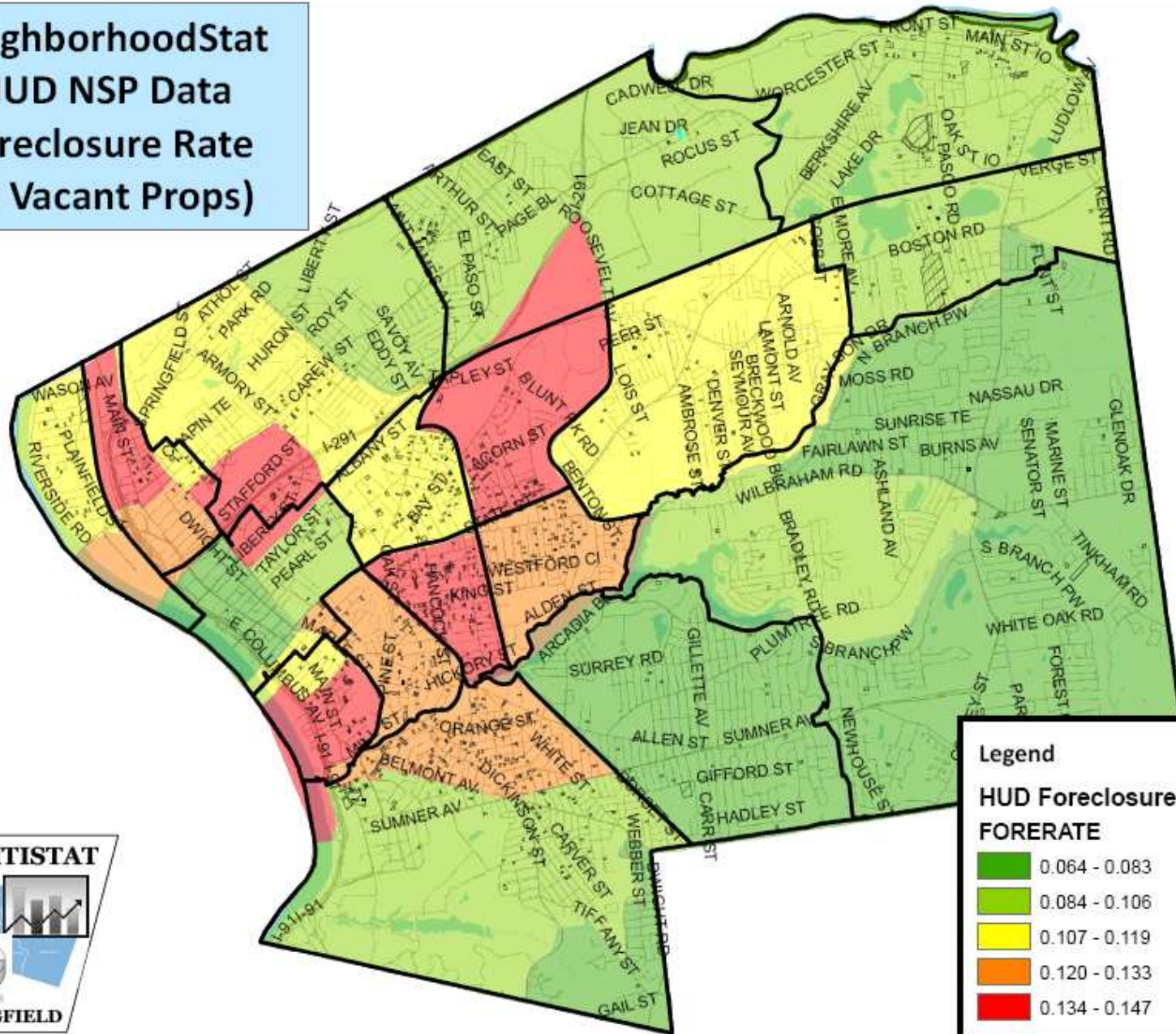
Legend

**HUD Foreclosure Data
90DAYRATE**

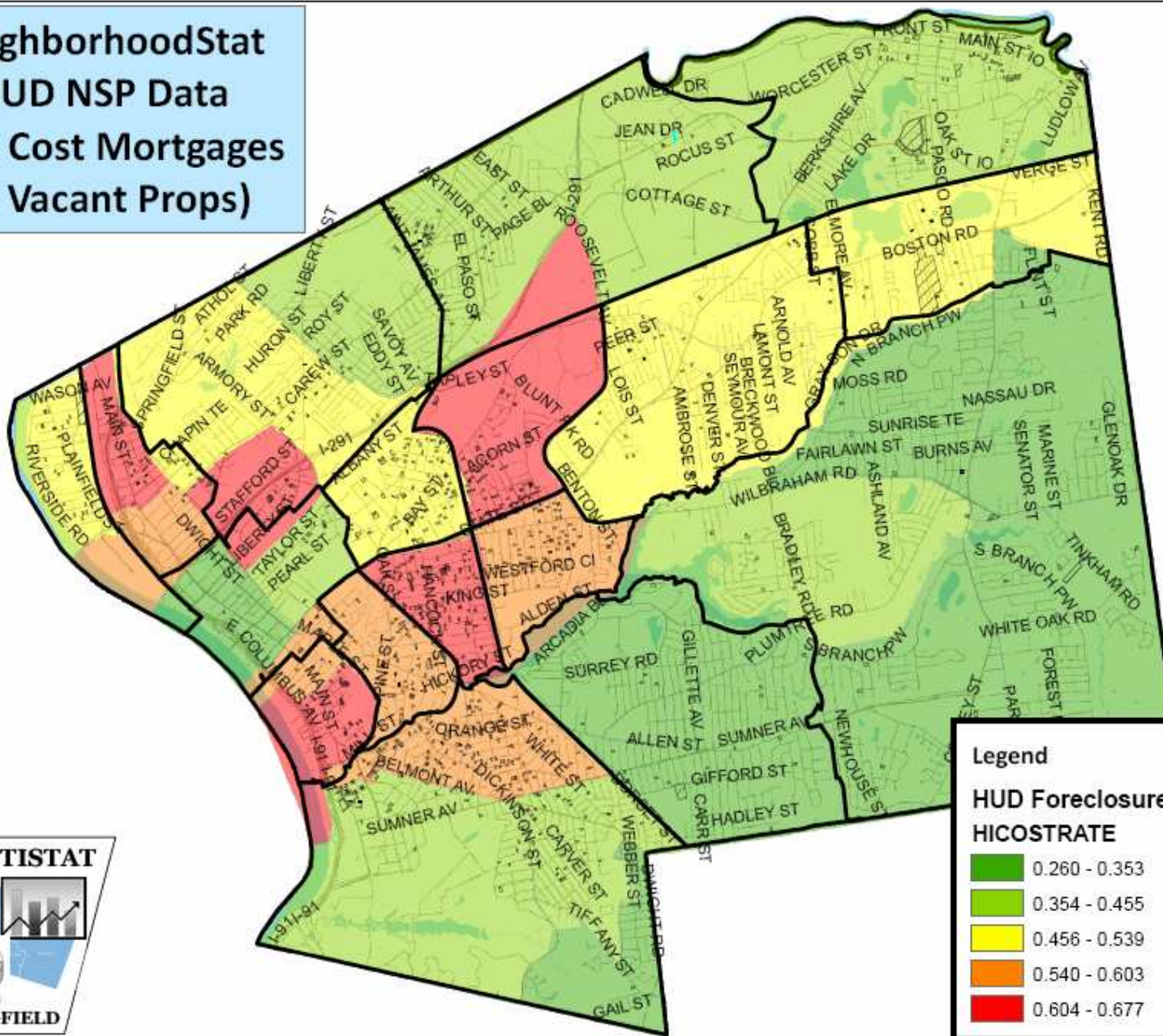
- 0.004 - 0.013
- 0.014 - 0.028
- 0.029 - 0.045
- 0.046 - 0.057
- 0.058 - 0.104



**NeighborhoodStat
HUD NSP Data
Foreclosure Rate
(w Vacant Props)**



**NeighborhoodStat
HUD NSP Data
High Cost Mortgages
(w Vacant Props)**



Legend

**HUD Foreclosure Data
HICOSTRATE**

■	0.260 - 0.353
■	0.354 - 0.455
■	0.456 - 0.539
■	0.540 - 0.603
■	0.604 - 0.677



NeighborhoodStat Old Hill - NSP Baseline Overview Map September 2009

Legend

311 Calls

- Catch Basin
- Illegal Dumping
- Potholes
- Roadway Deficiency
- Forestry

Fire Data
Type, SubType

- Fire, Building fire

Ord Squad by Source
CITIZEN

- <Null>
- 0
- 1

Ord Squad by Type
TOTAL

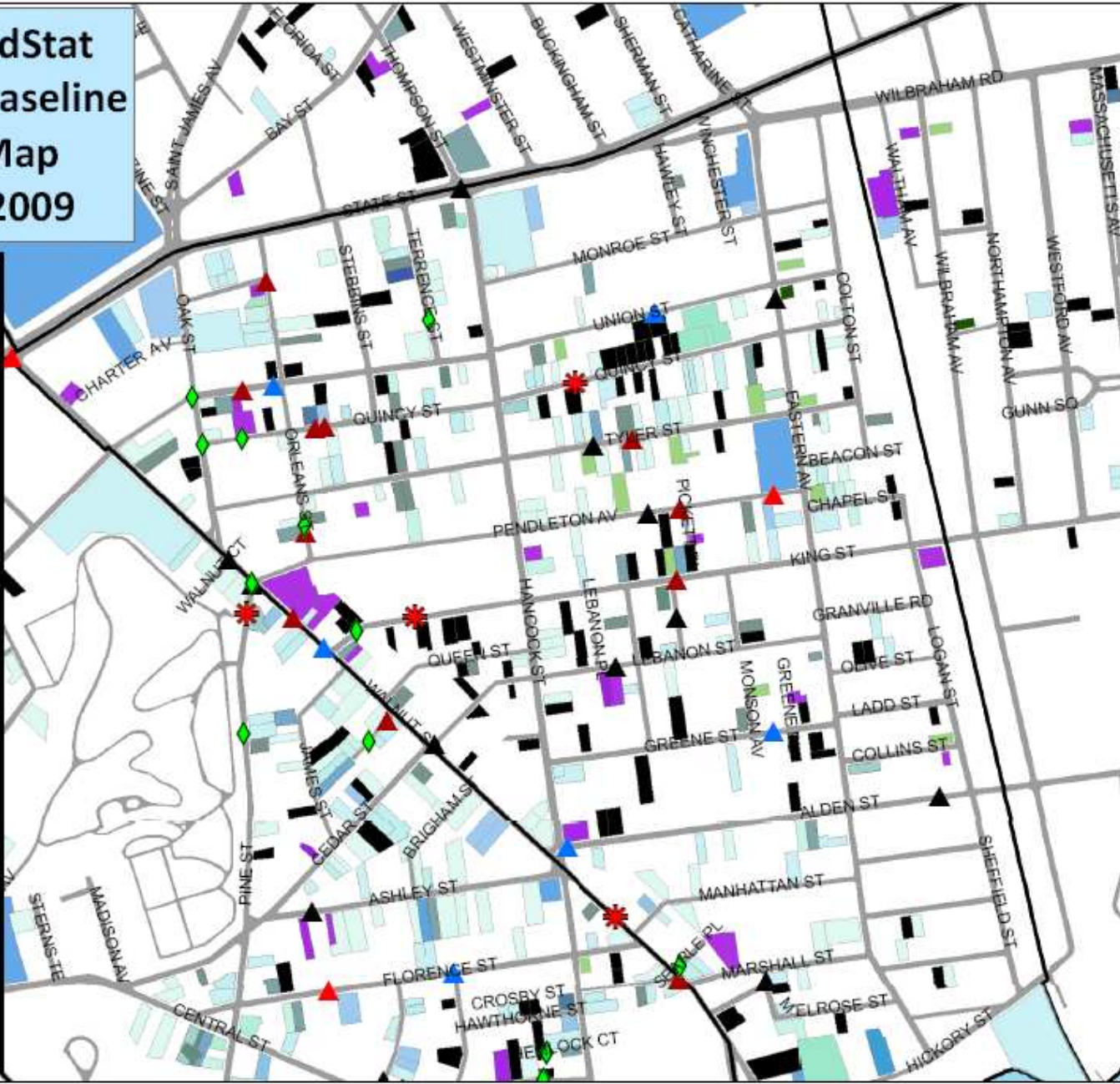
- 1
- 2-3
- 4-8
- 9-17
- 18-42

Housing Code Complaints
TOTAL

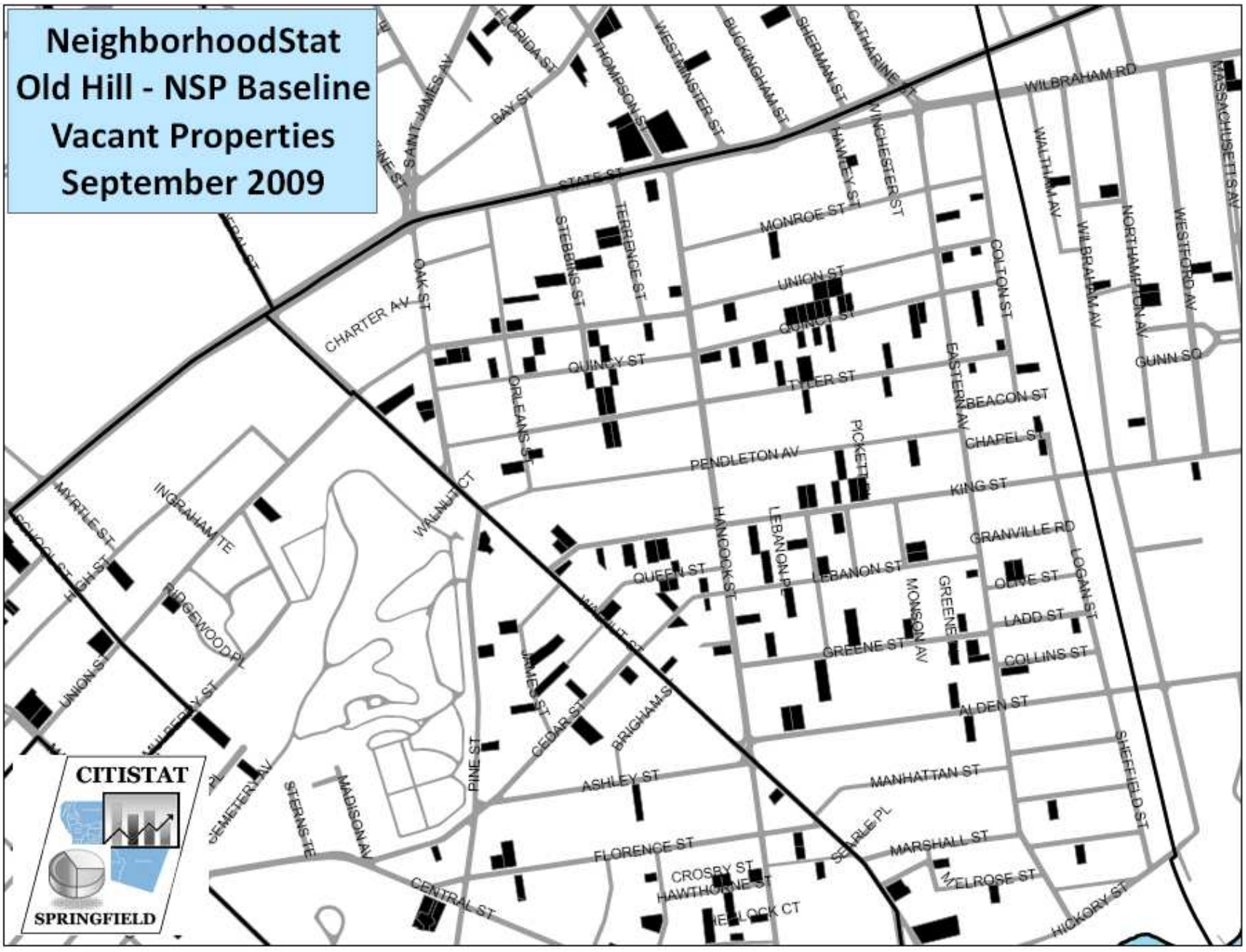
- 1
- 2
- 3
- 4-5
- 6-11

Development Efforts
TYPE

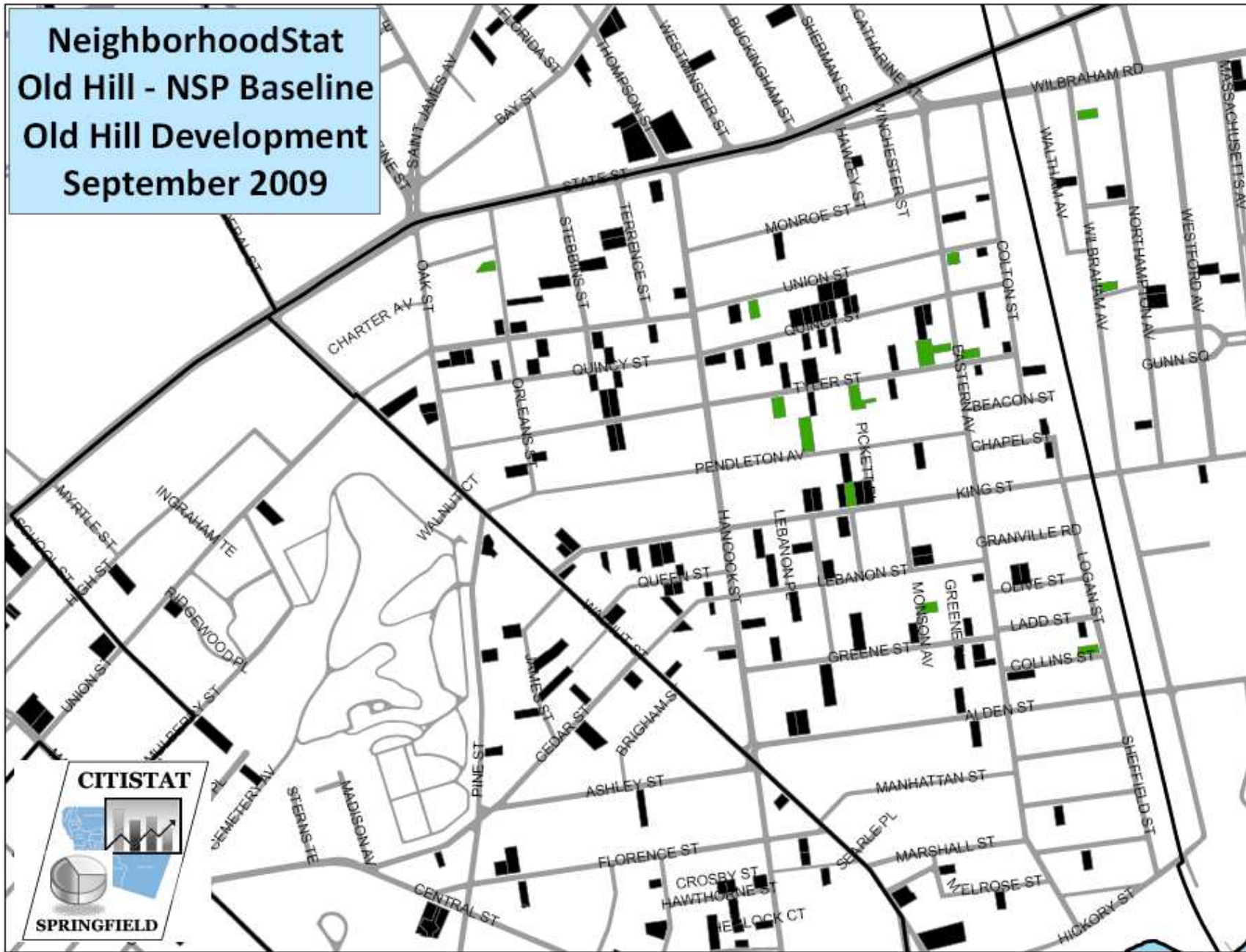
- <Null>
- ALTER



**NeighborhoodStat
Old Hill - NSP Baseline
Vacant Properties
September 2009**



**NeighborhoodStat
Old Hill - NSP Baseline
Old Hill Development
September 2009**



NeighborhoodStat Old Hill - NSP Baseline Other Data September 2009

Legend

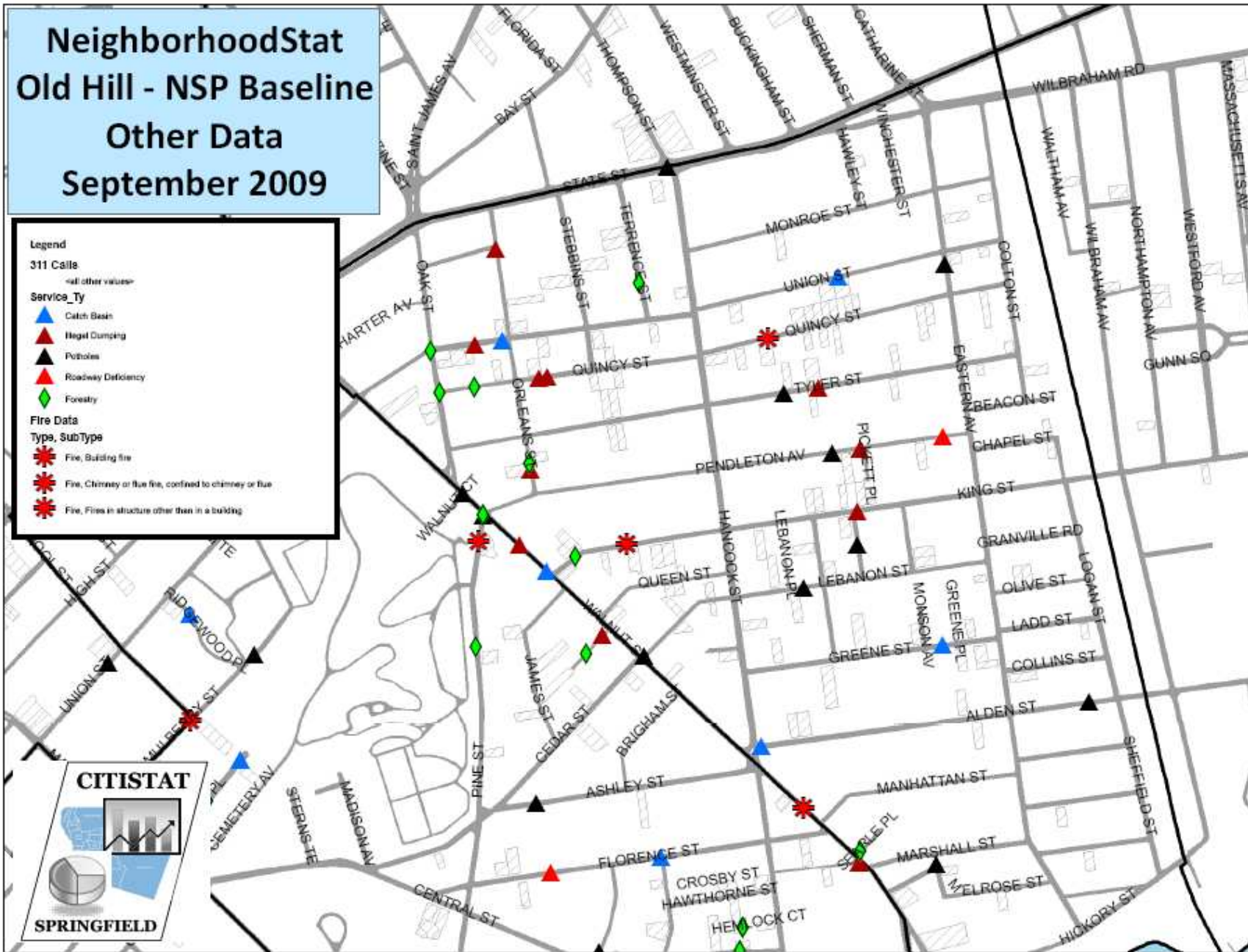
311 Calls
(all other values)

Service_Ty

- ▲ Catch Basin
- ▲ Illegal Dumping
- ▲ Potholes
- ◆ Roadway Deficiency
- ◆ Forestry

Fire Data
Type, SubType

- ✱ Fire, Building fire
- ✱ Fire, Chimney or flue fire, confined to chimney or flue
- ✱ Fire, Fires in structure other than in a building



Old Hill Metrics

Public Safety	Neighborhood		Citywide	Versus Last Year	Versus Citywide
	Same Period Last Year	Current Period	Current Period		
Select calls for service to SPD (per 1,000 people)					
Violent crime reports (per 1,000 people)					
Structure fires (per 1,000 parcels)		2.2	1.5		+0.7
Traffic and ordinance citations written by patrol officers (per 1,000 people)					

Old Hill Metrics

Quality of Life	Neighborhood		Citywide	Versus Last Year	Versus Citywide
	Same Period Last Year	Current Period	Current Period		
Number of housing code complaints (per 1,000 parcels)	83.0	109.7	59.4	+26.7	+50.3
Percent of housing code complaints that are emergencies	5.2%	7.2%	4.1%	+2.0	+3.1
Ordinance squad complaints (per 1,000 parcels)		111.1	71.3		+39.8

Old Hill Metrics

Civic Engagement	Neighborhood		Citywide	Versus Last Year	Versus Citywide
	Same Period Last Year	Current Period	Current Period		
Percent of housing code complaints received from citizens, tenants, or civic groups	27.8%	13.2%	33.2%	-14.6	-20.0
Percent of ordinance squad complaints generated by citizens		11.0%	13.4%		-2.4

Old Hill Metrics

Basic Services	Neighborhood		Citywide	Versus Last Year	Versus Citywide
	Same Period Last Year	Current Period	Current Period		
Percent of requests for service to 3-1-1 completed on time		37.2%	51.2%		-14.0
Average days to close ordinance squad requests		16 days	10 days		+6 days
Solid waste complaints (per 1,000 parcels)		9.4	6.7		+2.7
Potholes, roadway deficiency, and catch basin calls (per 1,000 parcels)		15.2	16.3		-1.1

Old Hill Metrics

Property	Neighborhood		Citywide	Versus Last Year	Versus Citywide
	Same Period Last Year	Current Period	Current Period		
Value of building permits issued per parcel					
Number of residential property sales (as a percent of parcels)					
Property foreclosure rate (from HUD, by Census Tract)		14.7%	10.1%		+4.6
Property vacancy rate (from HUD, by Census Tract)		10.4%	3.6%		+6.8
Percent of mortgages that are high cost (from HUD, by Census Tract)		67.3%	44.3%		+23.0